

Magnificat sexti toni - Gloria à6

Diego Ortiz
(~1500-1570)

C
Glo - ri - a Pa - tri, glo - ri-a Pa - tri, glo -

A 1
8
Glo - ri - a Pa - tri,

A 2
8
Glo - ri-a Pa - tri, glo -

T 1
8
Glo - ri-a Pa - tri, glo - ri-a Pa -

T 2
8
Glo - ri - a Pa -

B
Glo - ri - a Pa - tri, glo - ri - a Pa -

8
- ri - a Pa - tri, glo - ri - a Pa - tri et Fi-li - o, et

8
glo - ri - a Pa-tri, glo - ri-a Pa - tri et Fi - li -

8
- ri - a Pa - tri et Fi - li-o, et Fi -

8
- tri, glo - ri-a Pa - tri, Pa - tri et Fi -

8
tri, glo - ri - a Pa - tri et Fi -

tri, glo - ri - a Pa - tri et Fi - li -

Magnificat sexti toni - Gloria à6

Glo - ri - a Pa - tri, glo - ri - a

Pa - tri, glo - ri - a Pa -

tri, glo - ri - a Pa - tri et Fi - li -

o, et Fi - li - o, et

Spi - ri - tu - i San -

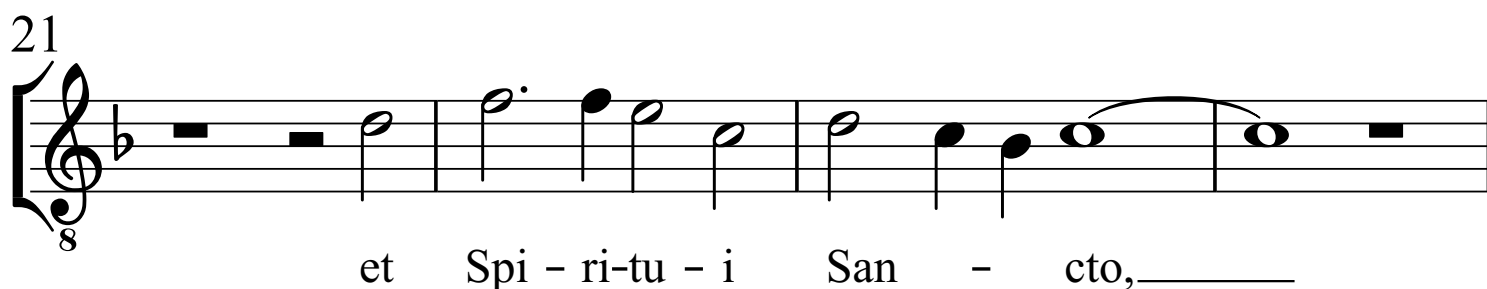
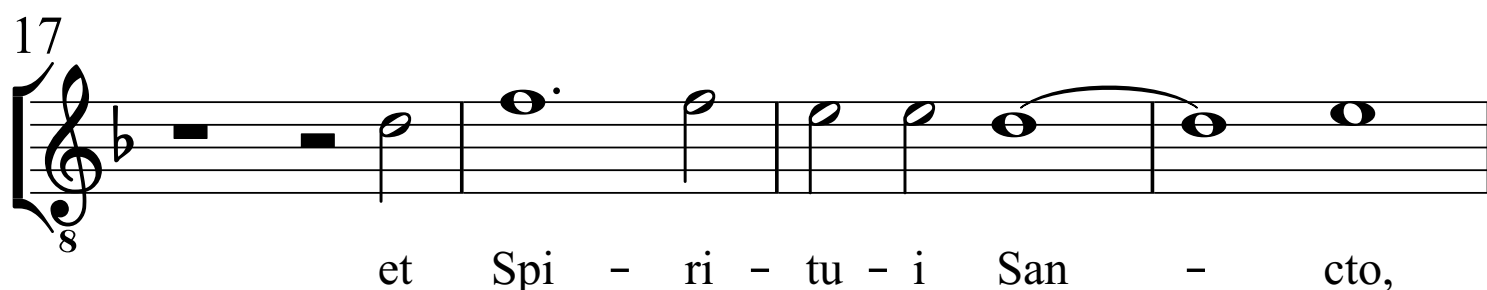
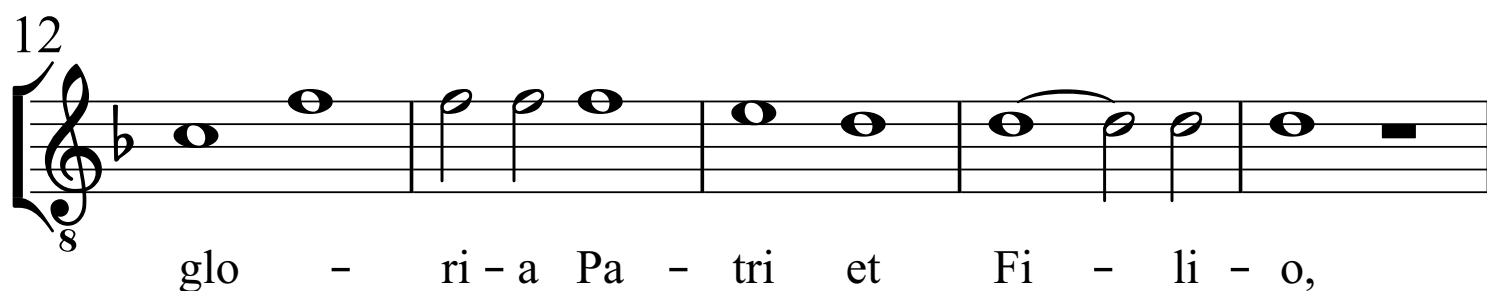
- cto, et Spi -

- ri - tu - i San - cto.

Alto 1

Diego Ortiz
(~1500-1570)

Magnificat sexti toni - Gloria à6



Magnificat sexti toni - Gloria à6

8
Glo - ri - a Pa - tri,

5
2
8
glo - ri - a Pa -

11
8
- tri et Fi - li - o,

15
8
et Fi - li - o, et Spi - ri - tu - i San -

19
8
- cto, et Spi - ri - tu -

23
8
i San - cto, et Spi - ri -

27
8
- tu - i San - cto.

Tenor 1

Diego Ortiz
(~1500-1570)

Magnificat sexti toni - Gloria à6

8
Glo - ri - a Pa - tri,

5
8
glo - ri - a Pa -

8
- tri, glo - ri - a Pa -

12
8
- tri, Pa - tri et Fi - li -

17
8
o, et Spi - ri - tu - i San -

22
8
cto, et Spi - ri - tu - i San - cto,

26
8
et Spi - ri - tu - i San - cto.

Tenor 2

Diego Ortiz
(~1500-1570)

Magnificat sexti toni - Gloria à6

3

Glo - ri - a Pa -

tri, glo - ri - a Pa - tri

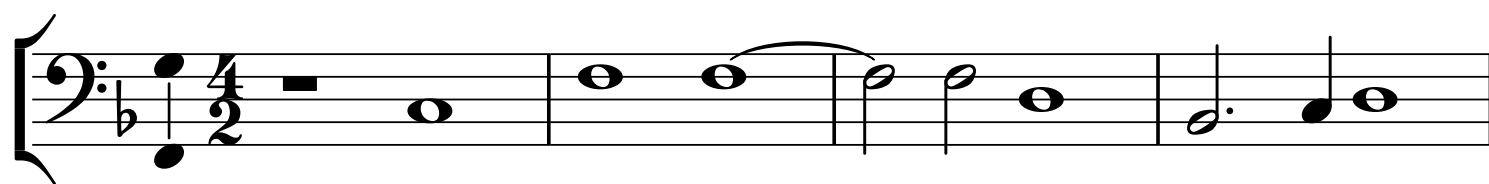
et Fi - li - o,

et Spi - ri - tu - i San -

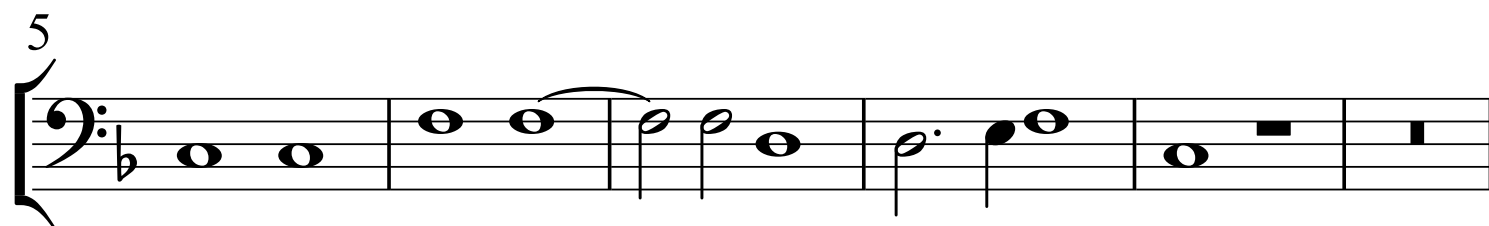
- cto, et Spi - ri - tu -

- i San - cto.

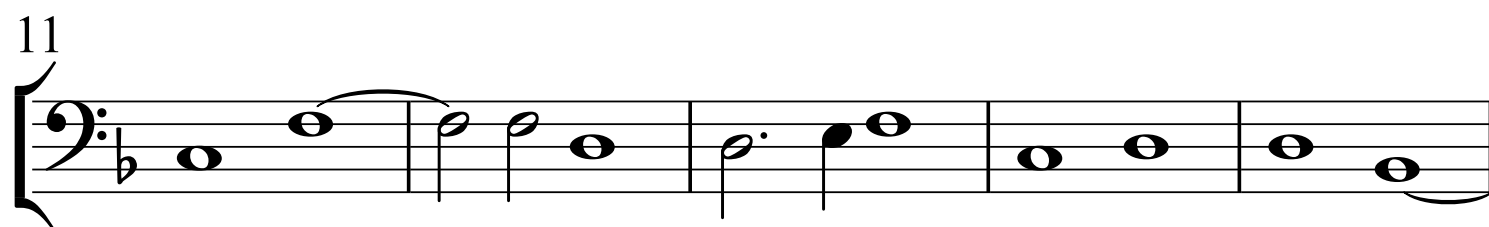
Magnificat sexti toni - Gloria à6



Glo - ri - a Pa -



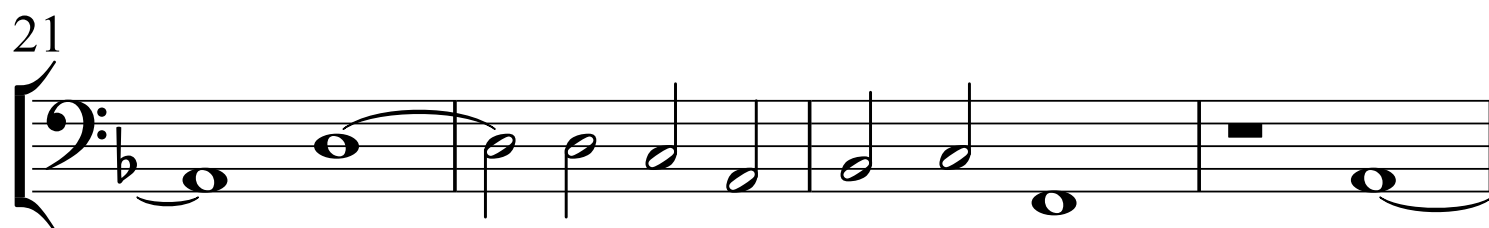
tri, glo - ri - a Pa - tri, _____



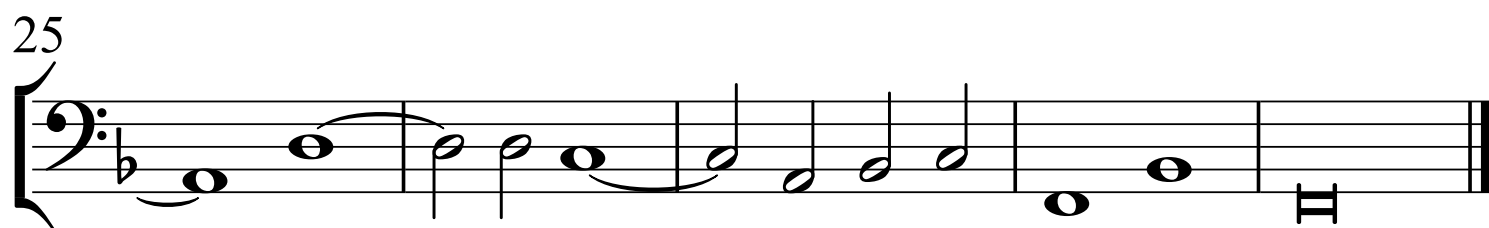
glo - ri - a Pa - tri et Fi - li -



- o, et Spi-ri - tu - i San - cto, et _____



____ Spi - ri - tu - i San - cto, et _____



____ Spi - ri - tu - i San - cto.